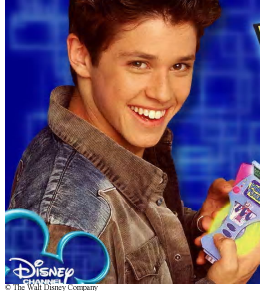


He may be a time traveler, but he's running out of time!

Save Phil of the Future



The Save Disney Shows movement was able to bring back the popular Disney Channel show *Kim Possible* due to fan pressure, so there's no reason we can't save *Phil* as well. There is power in numbers, and our numbers are growing... but we need everyone who loves the show as much as we do – no matter your age – in our effort.

Phil of the Future was cancelled in the Fall of 2005 at the end of Season two. Details on this are still sketchy, but it has been confirmed by sources inside. This group's owners are veterans of the successful Save *Kim Possible* campaign and we will be using many of the same techniques to save *Phil*.

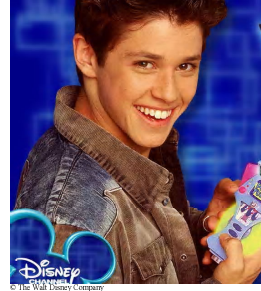
The Mission Kim Possible Group was founded 23 months ago. It took at least a year to get many of the tools and contacts that we would need to mount a decent campaign. MKP had about 700 members when we won. However, it's difficult to judge how many were still involved in the group and how many had just stayed joined but never participated. The PotF group has gone from 4 members to 109 in a single week, so I'm confident that our numbers will grow. The important thing is that every one here does help.

As for how long it took to save KP, we started that fight before the show started production of what we knew would be the last season. Because Disney hadn't announced, many fans didn't believe us and they didn't help. It wasn't until news of KP's end of production in February and The season Finale movie in April that the movement really got going. We're in about the same position with *Phil* as we were in February for KP. If there is a major push we could theoretically reduce that time, or if the push isn't as great as KP's fight it could be longer, or never.

Visit us at [http:// savepotf.org/](http://savepotf.org/) for more information.

He may be a time traveler, but he's running out of time!

Save Phil of the Future



The Save Disney Shows movement was able to bring back the popular Disney Channel show *Kim Possible* due to fan pressure, so there's no reason we can't save *Phil* as well. There is power in numbers, and our numbers are growing... but we need everyone who loves the show as much as we do – no matter your age – in our effort.

Phil of the Future was cancelled in the Fall of 2005 at the end of Season two. Details on this are still sketchy, but it has been confirmed by sources inside. This group's owners are veterans of the successful Save *Kim Possible* campaign and we will be using many of the same techniques to save *Phil*.

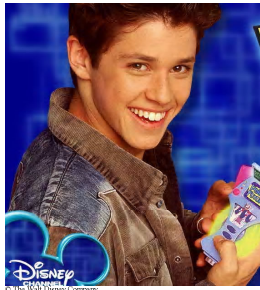
The Mission Kim Possible Group was founded 23 months ago. It took at least a year to get many of the tools and contacts that we would need to mount a decent campaign. MKP had about 700 members when we won. However, it's difficult to judge how many were still involved in the group and how many had just stayed joined but never participated. The PotF group has gone from 4 members to 109 in a single week, so I'm confident that our numbers will grow. The important thing is that every one here does help.

As for how long it took to save KP, we started that fight before the show started production of what we knew would be the last season. Because Disney hadn't announced, many fans didn't believe us and they didn't help. It wasn't until news of KP's end of production in February and The season Finale movie in April that the movement really got going. We're in about the same position with *Phil* as we were in February for KP. If there is a major push we could theoretically reduce that time, or if the push isn't as great as KP's fight it could be longer, or never.

Visit us at [http:// savepotf.org/](http://savepotf.org/) for more information.

He may be a time traveler, but he's running out of time!

Save Phil of the Future



The Save Disney Shows movement was able to bring back the popular Disney Channel show *Kim Possible* due to fan pressure, so there's no reason we can't save *Phil* as well. There is power in numbers, and our numbers are growing... but we need everyone who loves the show as much as we do – no matter your age – in our effort.

Phil of the Future was cancelled in the Fall of 2005 at the end of Season two. Details on this are still sketchy, but it has been confirmed by sources inside. This group's owners are veterans of the successful Save *Kim Possible* campaign and we will be using many of the same techniques to save *Phil*.

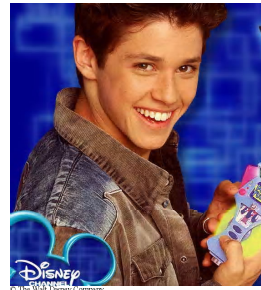
The Mission Kim Possible Group was founded 23 months ago. It took at least a year to get many of the tools and contacts that we would need to mount a decent campaign. MKP had about 700 members when we won. However, it's difficult to judge how many were still involved in the group and how many had just stayed joined but never participated. The PotF group has gone from 4 members to 109 in a single week, so I'm confident that our numbers will grow. The important thing is that every one here does help.

As for how long it took to save KP, we started that fight before the show started production of what we knew would be the last season. Because Disney hadn't announced, many fans didn't believe us and they didn't help. It wasn't until news of KP's end of production in February and The season Finale movie in April that the movement really got going. We're in about the same position with *Phil* as we were in February for KP. If there is a major push we could theoretically reduce that time, or if the push isn't as great as KP's fight it could be longer, or never.

Visit us at [http:// savepotf.org/](http://savepotf.org/) for more information.

He may be a time traveler, but he's running out of time!

Save Phil of the Future



The Save Disney Shows movement was able to bring back the popular Disney Channel show *Kim Possible* due to fan pressure, so there's no reason we can't save *Phil* as well. There is power in numbers, and our numbers are growing... but we need everyone who loves the show as much as we do – no matter your age – in our effort.

Phil of the Future was cancelled in the Fall of 2005 at the end of Season two. Details on this are still sketchy, but it has been confirmed by sources inside. This group's owners are veterans of the successful Save *Kim Possible* campaign and we will be using many of the same techniques to save *Phil*.

The Mission Kim Possible Group was founded 23 months ago. It took at least a year to get many of the tools and contacts that we would need to mount a decent campaign. MKP had about 700 members when we won. However, it's difficult to judge how many were still involved in the group and how many had just stayed joined but never participated. The PotF group has gone from 4 members to 109 in a single week, so I'm confident that our numbers will grow. The important thing is that every one here does help.

As for how long it took to save KP, we started that fight before the show started production of what we knew would be the last season. Because Disney hadn't announced, many fans didn't believe us and they didn't help. It wasn't until news of KP's end of production in February and The season Finale movie in April that the movement really got going. We're in about the same position with *Phil* as we were in February for KP. If there is a major push we could theoretically reduce that time, or if the push isn't as great as KP's fight it could be longer, or never.

Visit us at [http:// savepotf.org/](http://savepotf.org/) for more information.